



Town of Beech Mountain

403 Beech Mountain Parkway
Beech Mountain, North Carolina 28604-8012
Telephone (828) 387-4236
Fax (828) 387-4862
www.townofbeechmountain.com

Council Members
Rick Owen, Mayor
Paul Piquet, Vice Mayor
Alan Holcombe
Cynthia A. Keller
E "Rick" Miller

Randy E. Feierabend, AICP
Town Manager
Stacy C. Eggers, IV, Attorney

November 12, 2013

Town Council,

Staff has been working to take steps forward for the Town for the Watauga River Intake Project. Attached is a packet that concerns the material and presentation that staff will be giving to the Watauga County Commission in seeking a resolution of support for this project. The presentation will be done by Lee Spenser, our environmental consultant and Public Utilities Director Robert Heaton on Tuesday, November 19, 2013 at 5:30 p.m. in Boone at the County building. Below is a summary of the points that Mr. Spenser plans to cover during the presentation to answer the question of why the Town of Beech Mountain needs a supplemental water supply intake on the Watauga River:

- Drought – Beech Mountain’s location near the top of the mountain equates to a very small watershed drainage area of 2.84 square miles. In years when it does not rain very much, the town can be “hung out to dry”. Additional water storage will not solve the problem, when there is no water runoff to put into storage.
- Reliability – NC DENR strongly encourages alternative water supplies for every public water system. Small systems are required to have multiple wells, and larger systems are pushed to interconnect. Beech Mountain’s location precludes interconnection with another system. A recent Water and Sewer Study concluded that a supplemental intake on the Watauga River is the best alternative to ensure reliability of the town’s water supply.
- Spill Protection – Although it is unlikely that a contamination spill will occur above the existing Beech Mountain water intake, it could happen. The supplemental intake on the Watauga River will be designed to allow water to bypass the existing reservoir and go straight to the water treatment plant, if needed.
- Water Quality – Normally, any water pumped from the Watauga River will discharge into the Buckeye Reservoir. When the reservoir starts to drop, water will be pumped from the Watauga River. This will result in a fresh, well oxygenated water supply for both human consumption, and aquatic life in the reservoir and downstream of the reservoir.
- Protection of Public Health and Investment – Construction of this intake and raw water line is not an inexpensive endeavor. However, the leadership of Beech Mountain believes it is the right thing to do to protect both the public health and the investments of its citizens.

Please let me know if you plan to attend and wish to carpool to the meeting.

Sincerely,

Randy Feierabend AICP



Town of Beech Mountain

Randy E. Feierabend, AICP
Town Manager
Stacy C. Eggers, IV, Attorney

403 Beech Mountain Parkway
Beech Mountain, North Carolina 28604-8012
Telephone (828) 387-4236
Fax (828) 387-4862
www.townofbeechmountain.com

Council Members
Rick Owen, Mayor
Paul Piquet, Vice Mayor
Alan Holcombe
Cynthia A. Keller
E "Rick" Miller

October 15, 2013

Watauga County Commissioners and County Manager
841 West King Street, Suite 205
Boone, NC 28607

Gentlemen:

The Town of Beech Mountain respectfully requests that you consider the enclosed resolution in support of reclassification of a portion of the Watauga River. As the following packet explains, we are in need of a raw water intake in order to protect the Town in periods of drought. This intake is critical to the future viability of Beech Mountain.

Please find enclosed:

- A one page overview/ summary that provides the scope of the project.
- A letter and accompanying data from Beech Mountain Utilities Director Robert Heaton explaining the need for the project.
- Photos of Buckeye Reservoir during 2010 drought.
- A letter from Beech Mountain consulting engineer Marion Rothrock, PE describing how the town has investigated and exhausted all other alternatives to an intake on the Watauga River and we have determined this to be our best (and only) realistic option.
- A letter from our Environmental Consultant, Lee Spencer, in which he outlined the process for moving forward with this project.
- A letter in support of the project from Tom Boyd of Senior Environmental Specialist for NCDENR, Public Water Supply Section.
- A map developed by NCDENR depicting the watershed area for which a reclassification is sought.
- Maps depicting the location of the potential intake site that we have identified near the bridge over the Watauga River at Guy Ford Road.
- Several schematics depicting the design of the project from elevation and plan view perspectives.
- A draft of the aforementioned resolution in support of the reclassification.

We are hopeful that this reclassification can be done with minimal impacts upon land use regulations which are already in place in Watauga County. Please contact me with any questions or concerns. Thank you for your consideration.

Very Respectfully,

Randy Feierabend, AICP
Town Manager
Town of Beech Mountain, NC

Scope of the Project

In an effort to provide the Town of Beech Mountain (town) a reliable water supply during periods of drought, the town has decided to seek a supplemental water supply source. It has been determined that the closest, adequate, and most appropriate supplemental water source is the Watauga River near the confluence of Beech Creek.

In order to use this river as a drinking water source, it must be reclassified as "Water Supply Waters". Presently, the Watauga River, at the location of interest, is classified as B; HQW waters. The town intends to ask that a WS-IV classification be added to the current classification. The North Carolina Department of Environment and Natural Resources, Public Water Supply Section, supports the efforts of the town to locate a supplemental water intake on the Watauga River upstream of the confluence of Beech Creek (See attached letter dated 10/17/2011).

Considering a number of factors, the town has determined that a reasonable location for a water intake is just above where Guy Ford Road crosses the Watauga River. The intent is to construct the intake along this relatively straight stretch of the river just upstream of Guy Ford Road.

If final approval is ultimately granted, the town intends to construct an unobtrusive intake with a small footprint. The plan is for the finished contour of the river bank to closely match the original contour, with no physical structure in the river. The hope is that the casual observer may not know that a water intake is present. (See attached drawings.)

This water source will primarily be used when the existing Buckeye Creek Reservoir falls below its normal pool water level. The primary purpose will be to ensure a dependable water source during periods of drought.

The maximum requested instantaneous withdrawal rate will be 2 MGD. This amount of water is well below the normally accepted withdrawal rate of 20% of the 7Q10 flow rate, which is 3.3 MGD. (A formal USGS determination of flow at the location of interest was obtained in August, 2011.)



Town of Beech Mountain

Randy E. Feierabend, AICP
Town Manager
Stacy C. Eggers, IV, Attorney

403 Beech Mountain Parkway
Beech Mountain, North Carolina 28604-8012
Telephone (828) 387-4236
Fax (828) 387-4862
www.townofbeechmountain.com

Council Members
Rick Owen, Mayor
Paul Piquet, Vice Mayor
Alan Holcombe
Cynthia A. Keller
E "Rick" Miller

October 29, 2013

Watauga County Commissioners and County Manager
841 West King Street, Suite 205
Boone, NC 28607

Gentlemen:

Pursuant to our request for a watershed reclassification for a new supplemental raw water intake on the Watauga River, I would like to submit to you the following letter and the attached information to document our need for this water source. I believe that it is imperative that the Town of Beech Mountain secure a reliable water source in order to avoid catastrophic water shortages in the future.

The data regarding the capacity of Buckeye Lake as a water source and the inflow of Buckeye Creek make the need for an additional water source very evident. J. Curtis Weaver, P.E., hydrologist for the USGS North Carolina Water Science Center, provided the following data in a letter to the Town of Beech Mountain:

"Applying the [above] low-flow and mean annual runoff yields ... to a drainage area of 2.84 sqmi (Buckeye Reservoir drainage area) results in following flow estimates:

7Q10 low-flow estimated range is from about 0.6 to 0.9 cfs (with an average of about 0.7 cfs)"

This equates to 0.454 MGD of flow during the driest 7 day period in 10 years. The Division of Water Resources normally considers a safe and reliable supply to be 20% of this number, or 0.0908 MGD. Beech Mountain's water plant is approved for 1 MGD, and last year's average daily use was 0.356 MGD, with a maximum daily use of 0.784 MGD.

This means that Beech Mountain is using 3.9 times the amount of water on average that would likely be allowed if seeking approval for a water supply from Buckeye Creek today. The maximum daily use last year was over 8.6 times the amount that would be approved today, and the approved water plant capacity is over 11.01 times the amount that would be approved today.

Further, the need for a supplemental intake for Beech Mountain is intensified by the Town's large potential for growth. This potential for growth differentiates Beech Mountain from many of the other municipalities in Watauga County, which are at or near build-out capacity and will experience more measured growth in the future. Although growth has occurred more slowly in recent years, the Town of Beech Mountain has an abundance of subdivided building lots that are primed for construction. And though the prospect of occupying all of Beech Mountain's buildable lots is distant, it is nevertheless feasible in the long-term.

As of 2010, there were 5434 lots in the Town of Beech Mountain, 1754 of which are currently built upon, or roughly 32%. Assuming that 85% of the remaining 3680 lots are eventually buildable, and assuming single family residences will be the predominant land use, there is potential for at least 3128 new homes

in the Town of Beech Mountain, which is 137% of the current number. With 3128 new housing units in Beech Mountain, the population figures would be as follows:

- 5415 total housing units
- Approximate seasonal population of 12,129 (calculated using current average of 2.24 persons per housing unit)
- Approximate year round population of 815 (calculated using the current ratio of .15 year round residents per housing unit)

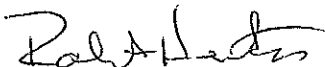
Without question, the water needs of growth anywhere near these figures would greatly overtax the supply of Buckeye Lake.

But putting numbers aside and focusing on real-world impacts, the tangible event that highlighted the need for the water source in the most dramatic way was the extreme drought conditions that the Town of Beech Mountain experienced in the summer of 2010. After several months of little or no stream flow coming into Buckeye Lake, the reservoir began to drop severely. Simultaneously, due to the lack of stream flow to provide circulation in the lake and the long hot sunny days, an algae bloom occurred in the lake. The combined conditions made it very difficult to filter water, increasing backwash frequency and shortening run times greatly. Our seasonal population was in full force and the demand for water was high, and the lake began to drop drastically. At its worst point, we had only a few inches of water over our lowest intake. We had already activated highly restrictive water usage to conserve water, but we had no viable way to supplement our source water. Thankfully, we finally received some rain at the end of August and were able to get through.

Although this event was severe, it was not unique. Beech Mountain has experienced multiple instances of exceeding the capacity of Buckeye Lake in the past. The attached spreadsheet shows the high source flows through our plant over the last 10 years. The flags (yellow, orange and red highlights) are placed on months during which there were one or more instances of flows of over 700,000 gallons in a single day- exceeding our allowable withdrawal from Buckeye Lake.

I hope you find this information useful in demonstrating the need for this project. Thank you for your consideration, and please feel free to contact me with any questions on this matter.

Sincerely,



Robert Heaton
Utilities Director
Town of Beech Mountain, NC

Monthly Source Flow - Town of Beech Mountain

All values reported in Million Gallons per Day format (MGD)

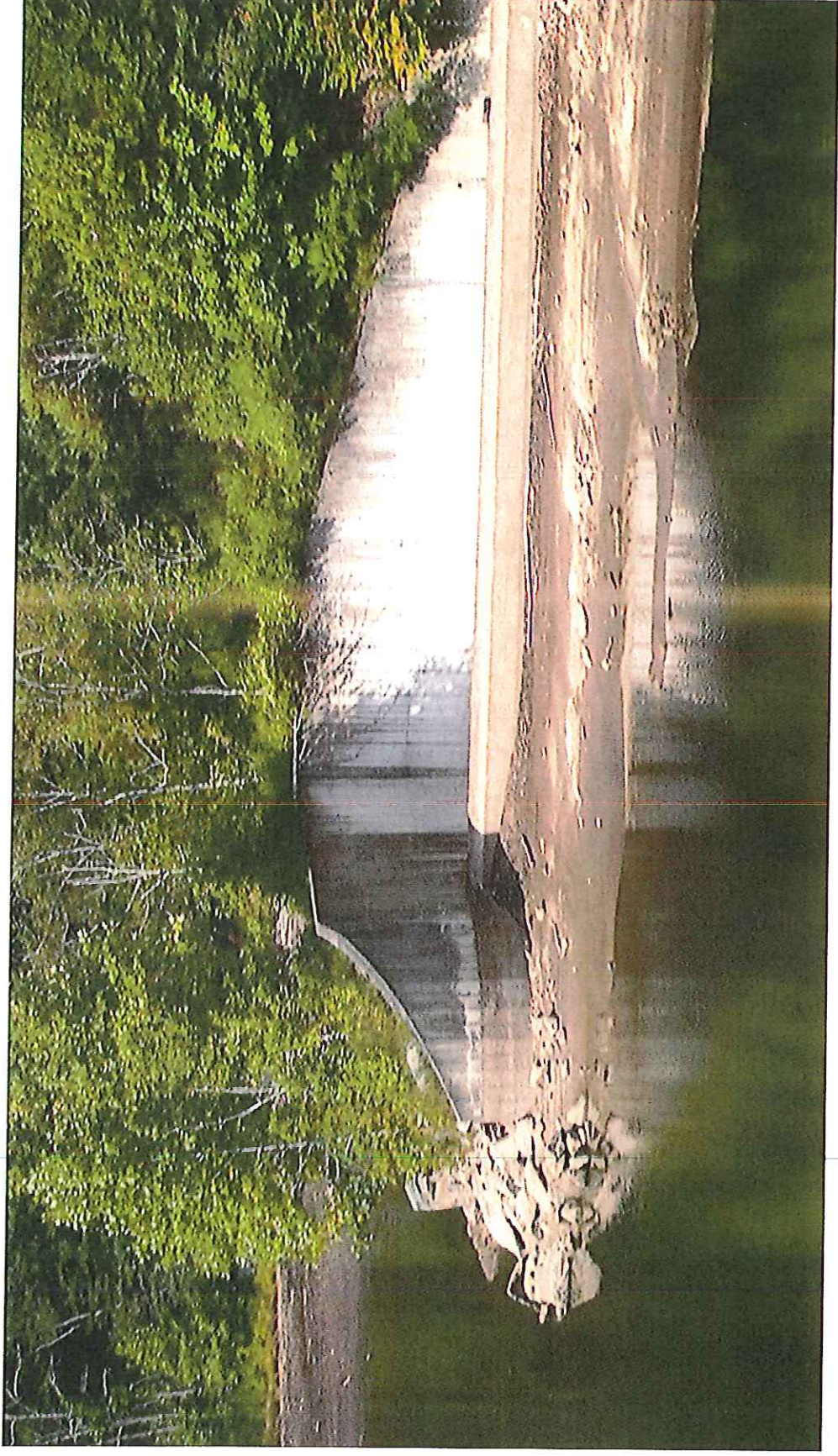
2004		2005		2006		2007		2008			
AVG.	MAX	TOT	AVG.	MAX	TOT	AVG.	MAX	TOT	AVG.	MAX	TOT
JAN	0.342	0.587	10.614	JAN	0.418	0.661	12.961	JAN	0.398	0.710	12.328
FEB	0.341	0.731	9.895	FEB	0.473	0.958	13.225	FEB	0.455	0.747	12.735
MAR	0.225	0.413	6.978	MAR	0.267	0.387	8.257	MAR	0.345	0.524	10.670
APR	0.182	0.344	5.440	APR	0.247	0.325	7.391	APR	0.343	0.502	10.646
MAY	0.262	0.448	8.122	MAY	0.280	0.639	8.691	MAY	0.293	0.374	9.060
JUN	0.310	0.623	9.285	JUN	0.336	0.571	10.103	JUN	0.377	0.506	11.326
JUL	0.390	0.652	12.096	JUL	0.442	0.591	13.697	JUL	0.467	0.817	14.484
AUG	0.346	0.430	10.727	AUG	0.411	0.690	12.730	AUG	0.455	0.701	14.114
SEP	0.367	0.499	8.645	SEP	0.348	0.463	10.441	SEP	0.442	0.693	13.265
OCT	0.277	0.401	8.585	OCT	0.323	0.469	9.993	OCT	0.427	0.691	13.248
NOV	0.253	0.483	7.609	NOV	0.334	0.621	10.010	NOV	0.351	0.402	10.588
DEC	0.309	0.618	9.564	DEC	0.437	0.998	13.548	DEC	0.377	0.651	11.306
2009		2010		2011		2012		2013			
JAN	0.487	0.902	15.097	JAN	0.412	0.824	12.775	JAN	0.365	0.572	11.310
FEB	0.425	0.610	13.164	FEB	0.421	0.769	11.789	FEB	0.334	0.574	9.675
MAR	0.309	0.465	9.582	MAR	0.319	0.513	9.889	MAR	0.256	0.349	7.951
APR	0.258	0.408	7.745	APR	0.288	0.516	8.939	APR	0.262	0.346	7.856
MAY	0.300	0.422	9.291	MAY	0.332	0.463	10.288	MAY	0.344	0.591	10.676
JUN	0.442	0.904	13.693	JUN	0.433	0.525	12.976	JUN	0.371	0.681	11.118
JUL	0.507	0.800	15.732	JUL	0.494	0.721	15.303	JUL	0.424	0.628	13.131
AUG	0.492	0.976	15.240	AUG	0.442	0.871	13.702	AUG	0.411	0.784	12.735
SEP	0.340	0.442	10.201	SEP	0.439	0.739	13.175	SEP	0.401	0.771	12.038
OCT	0.359	0.776	11.117	OCT	0.430	0.687	13.325	OCT	0.430	0.613	13.326
NOV	0.283	0.404	8.496	NOV	0.437	0.730	13.101	NOV	0.359	0.523	10.762
DEC	0.397	0.749	12.304	DEC	0.474	0.799	14.688	DEC	0.316	0.711	9.784

Totals = Greater than .700 MGD 20 = Greater than .800 MGD 9 = Greater than .800 MGD 5 = Greater than .900 MGD

Buckeye Lake Water Level- Summer 2010



Buckeye Lake Water Level- July 30, 2010



Rothrock Engineering

P. Marion Rothrock, P.E.

N.C. PE 3476
NC PLS L-1668

Telephone * 828/757-9834 Cell * 828/757-7689
E-mail * rothrockengineering@gmail.com
4779 Kirby Mtn. Rd. * Lenoir, NC 28645

CONSULTING ENGINEERS

Civil - Mech. - Elec.
Sub-Division - Water - Sewer
Grading - Erosion Control

November 6, 2013

Watauga County Commissioners and County Manager
841 West King Street
Boone, NC 28607

Re: Watauga River Reclassification

Gentlemen:

In June 2011, Rothrock Engineering completed a Water and Sewer Study for the Town of Beech Mountain. One of the many parameters which were evaluated during this study was the raw water supply for the Town of Beech Mountain's Water Treatment Plant.

There was a drought in 2010 that impacted the Town of Beech Mountain. The lake level got down to where, without rain, Beech Mountain would be totally without water in only a few days-- even with severe restrictions on water usage. This event is not unique but is the latest close call for the Town.

The Engineering study addressed the raw water supply for The Town of Beech Mountain. The options that were considered were:

- 1- Pumping Station on Pond Creek
- 2- Raise the dam to the Reservoir
- 3- Wells
- 4- Watauga River

1- PUMP STATION ON POND CREEK

This is not a viable solution because the available flow rate is only about 0.12 MGD. This when added to the flow from Buckeye Creek only gets the total flow available during a drought up to 0.22 MGD. With the water plant rated at 1.0 MGD, this is not adequate flow even under present conditions during a drought.

2- RAISE THE DAM

Consideration was given to raising the dam 10.0 feet. This would not change the raw water supply but would add 21,000,000 - 22,000,000 gallons of water or about 21-22 days of water storage. While this would be great help during a drought it is not a long term solution to Beech Mountain's raw water problems.

November 6, 2013

Re: Watauga River Reclassification

3- WELLS

This was originally considered and the Town hired ANALYTICAL SERVICES, INC. of Culpepper, Virginia to do a study of the likely hood of finding significant ground water on Beech Mountain.

This was the same group who found a very large aquifer for Caldwell County. Their analysis showed that it was unlikely that sufficient ground water would be available on Beech Mountain to make a significant difference.

4- Watauga River

The Watauga River was considered last among all of the available options because of the distance and therefore the cost. However, since the 7Q10 for the Watauga is between 16.2 and 24.6 MGD with a safe yield of 3.24 - 4.92 MGD it is a solution which can serve the Town for most, if not all of the next century.

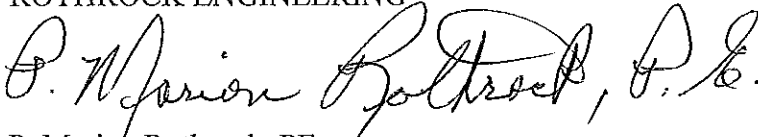
NCDENR pushes municipalities to have a cross connection with adjoining municipalities where this is practical. This arrangement was recently completed between Boone, ASU and Blowing Rock. The only Municipality that Beech Mountain could possibly use was Banner Elk. This is not a viable option because of the significant difference in elevation as well as the fact the Banner Elk is on a well system and does not have a significant excess of well water.

The raw water line between the Watauga River and Buckeye Lake will run along the shoulder of the road inside the DOT Maintained Roadway Limits. It will require 2-3 booster pump stations in order to overcome the elevation difference.

The Town of Beech Mountain only has the Watauga River as a long term solution to their raw water needs.

If you have any questions or need any additional information, please feel free to contact me.

ROTHROCK ENGINEERING



P. Marion Rothrock, PE
President

August 29, 2011

Beech Mountain Town Council
403 Beech Mountain Parkway
Beech Mountain, N.C. 28604-8012

Re: Proposal for Reclassification of Watauga River to WS-IV

Gentlemen:

In an effort to provide the Town of Beech Mountain (town) a reliable water supply during periods of drought, the town has decided to seek a supplemental water supply source. It has been determined that the closest, adequate supplemental water source is the Watauga River near the confluence of Beech Creek.

Numerous steps must be taken before the town can use the Watauga River as a water supply source. One item that must be undertaken is the reclassification of the Watauga River as a drinking water source.

Presently, the Watauga River, at the location of interest, is classified as B; HQW waters. The B classification is for primary recreation uses, as well as other uses suitable for Class C waters. The HQW (High Quality Waters) is a supplemental classification intended to protect waters which are rated excellent based on biological and physical/chemical characteristics. In order to use this river as a drinking water source, it must be reclassified as "Water Supply Waters". It is recommended that a WS-IV classification be sought. This is the least restrictive water supply source classification, but this should be adequate, considering the river already has the HQW supplemental classification. Also, this source is only intended to be used when the existing Buckeye Creek Reservoir falls below its normal pool water level. Ordinarily, this will only occur during periods of drought.

If the town council concurs, I propose to make every reasonable effort to obtain a WS-IV classification for the Watauga River at the point of interest. This effort will include:

- Meeting with Public Water Supply Section (PWSS) regional staff to gain preliminary approval of two or three potential intake sites.
- Request for PWSS approval of the preliminary intake site(s).
- Selection of a desired intake site. This task will be conducted by Rothrock Engineering in consultation with town staff. It is strongly recommended that once a site has been selected, an option be acquired on the desired property.

- Preparation of a draft Scoping Document to outline the need for this water supply source. This document will need to have a map attachment showing the intake location, and a description of the type of proposed intake structure.
- Arrangement of a meeting in order that the need for the supplemental water source can be explained to all affected local governments. It will be explained that resolutions will be needed from all local governments with jurisdiction in the proposed water supply watershed, in order to complete the application for reclassification. At this meeting, affected local governments can present any comments and concerns.
- Draft resolutions to appropriate local governments, and follow-up to obtain completed resolutions.
- Arrangement of a preliminary planning meeting in order that the need for the supplemental water source can be explained to all affected state and federal governmental agencies. At this meeting, these agencies can verbally present their comments and concerns.
- Submission of the Scoping Document with a request for written comments from all affected and interested parties within state and federal government.
- With the concurrence of the Town Manager and Rothrock Engineering, arrangement of qualified consultant to conduct the required Environmental Assessment (EA) as determined by DENR. (It is anticipated that one EA should be sufficient to cover the entire process, ie., reclassification of the Watauga River to WS-IV and Authorization to Construct the water intake.)
- Supervision of the development of the EA to make sure all requested concerns by governmental agencies are adequately addressed, and that a draft EA, and final EA are both completed in a timely manner.
- Submission of an application for Water Supply Reclassification to the Division of Water Quality, Department of Environment and Natural Resources (DENR). Required Resolutions from local governments and a draft EA will accompany the application.
- Assist DENR with arrangements for the Public Hearing required for the Water Supply reclassification.
- Attend and address comments raised during the Public Hearing for Water Supply reclassification.
- Attend and address comments raised during the Water Quality Committee (WQC) and Environmental Management Commission (EMC) hearings on the reclassification process.
- Follow-up with DENR to obtain the EMC ruling on the application for the Water Supply reclassification.

It is anticipated that this reclassification effort will take between two to three years, possibly longer. Every attempt will be made to achieve the reclassification as quickly as possible.

Beech Mountain Town Council
August 29, 2011
Page 3

My work on this project will be done on an hourly basis. A summary of work and invoice will be submitted monthly, during months when work is performed. My rate is \$130 per hour with no additional charges for travel, office supplies, and other incidentals. If overnight travel should be required, it will be billed at cost.

Thank you for the opportunity to submit this proposal.

Sincerely,

Lee G. Spencer, P.E.
2934 Buena Vista Road
Winston-Salem, N.C. 27106

cc: Rothrock Engineering



North Carolina Department of Environment and Natural Resources
Division of Water Resources

Beverly Eaves Perdue
Governor

Thomas A. Reeder
Director

Dee Freeman
Secretary

October 17, 2011

Mr. Lee Spencer, P.E.
2934 Buena Vista Road
Winston-Salem, N.C. 27106

Re: Supplemental Water Intake, Watauga River
Town of Beech Mountain, Watauga County
PWS ID# NC0195104

Dear Mr. Spencer:

This letter is in response to your letter dated October 4, 2011, requesting the Public Water Supply Section's approval of efforts to seek a supplemental water intake for the Town of Beech Mountain (town). The town is challenged with adequate source water during periods of drought due to the relatively small water shed of Buckeye Creek.

This office supports the efforts of the town to locate a supplemental source water intake in the Watauga River upstream of the confluence of Beech Creek.

Please contact me if you have any questions or concerns at (336) 771-5080.

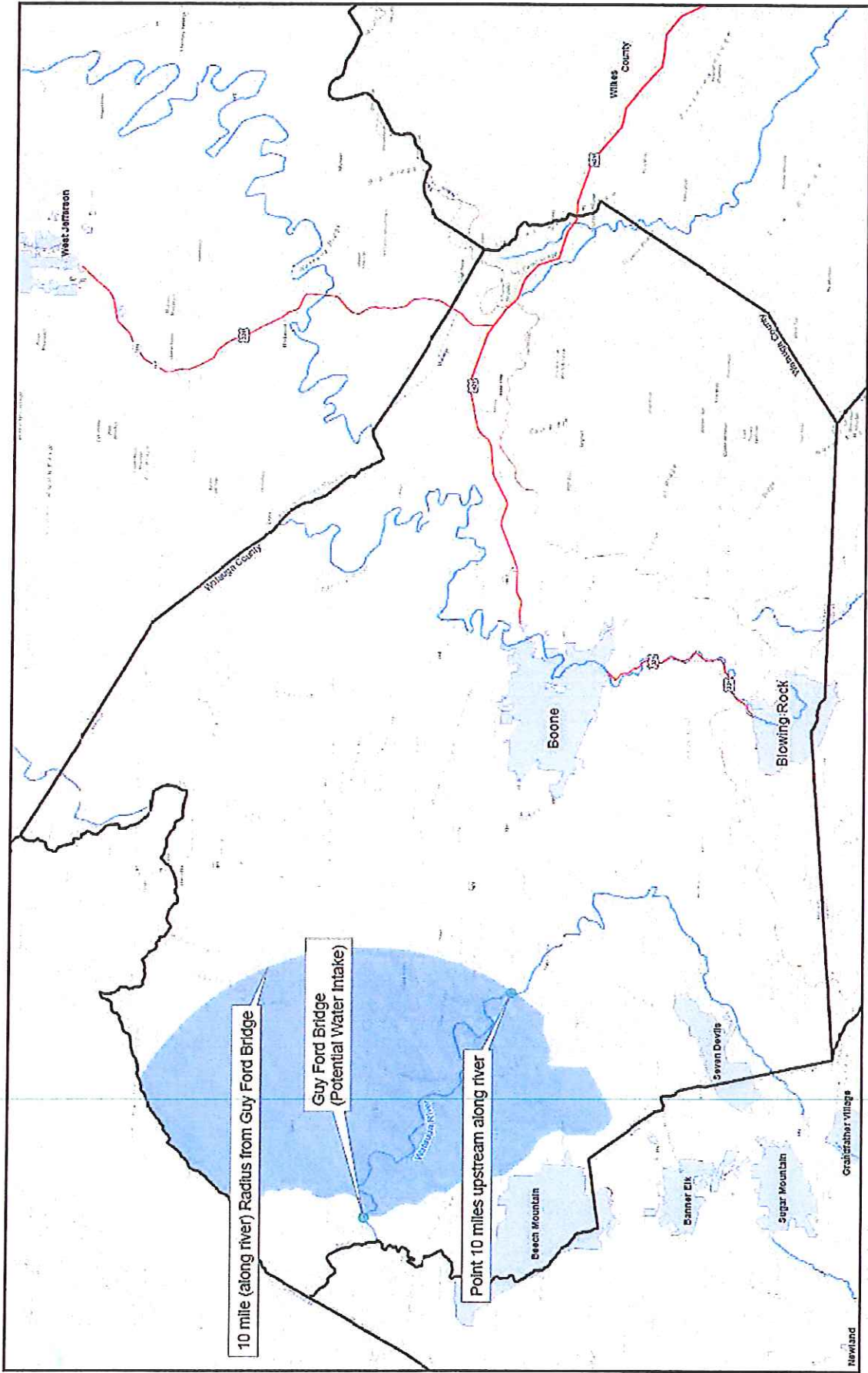
Sincerely,

Tom Boyd
Environmental Senior Specialist
Public Water Supply Section

CC: Jessica C. Godreau, P.E., BCBE, Chief, Public Water Supply Section
Randy Feierabend, Manager, Town of Beech Mountain
Robert Heaton, Public Works Director, Town of Beech Mountain
Marion Rothrock, P.E., Rothrock Engineering
WSRO Files

Public Water Supply Section – Jessica C. Godreau, Chief
Winston-Salem Regional Office
585 Waughtown Street, Winston-Salem, North Carolina 27107-2241
Phone: 336-771-5000 \ FAX: 336-771-4631 \ Internet: ncdrinkwater.state.nc.us
An Equal Opportunity \ Affirmative Action Employer

One
North Carolina
Naturally



10 mile (along river) Radius from Guy Ford Bridge

Guy Ford Bridge
(Potential Water Intake)

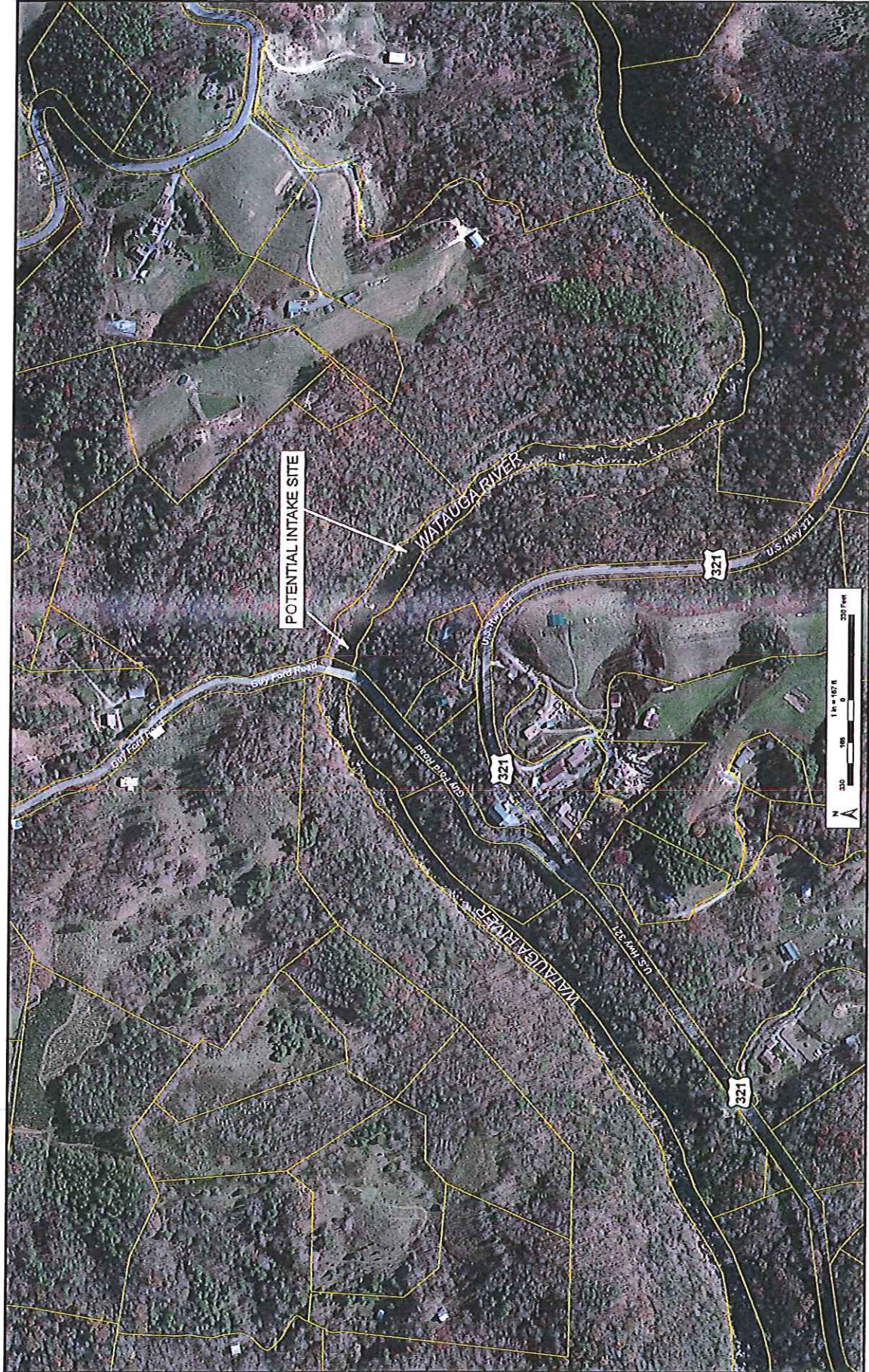
Point 10 miles upstream along river

PROPOSED WATERSHED RE-CLASSIFICATION
FOR TOWN OF BEECH MOUNTAIN
WATAUGA RIVER INTAKE PROJECT



- LEGEND
- Protected Watershed Area
 - Rivers
 - Potential Intake Point Point 10 miles upriver
 - Municipal Boundaries

NOTES:
 1. WATERSHED BOUNDARIES BY USFWS
 2. DATA SOURCES: WATERSHED DATA FROM USFWS
 3. MAP DATE: 10/24/13

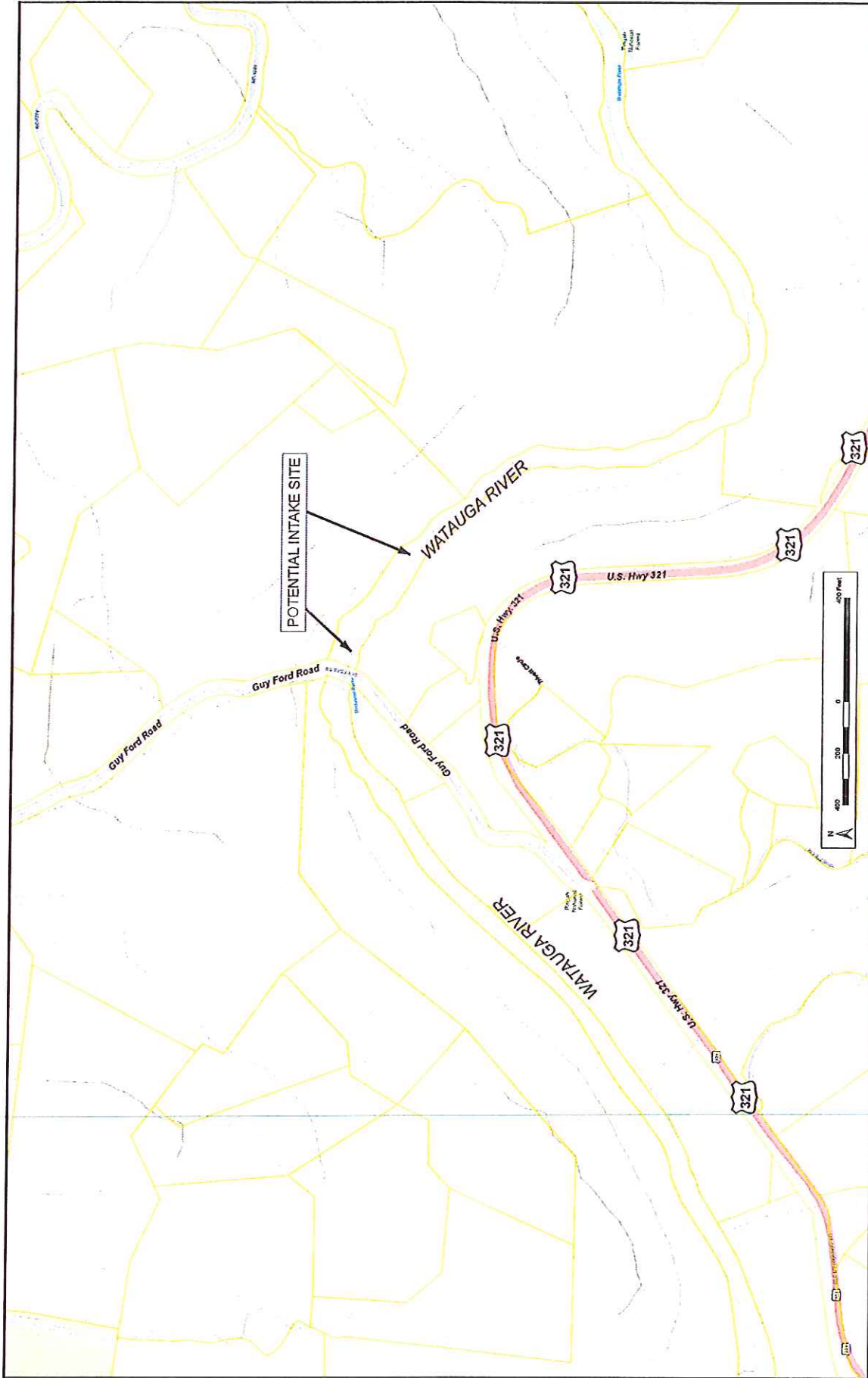


Rothrock Engineering
 CONSULTANTS, P.C.
 TOWN OF BIRCH MOUNTAIN
 POTENTIAL WATAUGA RIVER WATER INTAKE
 TOWN OF BIRCH MOUNTAIN
 COUNTY
 SHEET NO. 1 OF 1
 DATE 7/24/12

DATE
 PROJECT NO.

LEGEND
 [Yellow outline symbol] PROPERTY PARCELS (FROM COUNTY TAX DATA)

NOTES:
 1. INFORMATION FROM 2010 NC STATEWIDE PLANNING ACQUISITION;
 2. CONTOUR LINES FROM NCOTF DATA
 REVISION NO. 1 7/24/12



NOTES:

LEGEND

- PROPERTY PARCELS (FROM COUNTY TAX DATA)

Rotbrock Engineering
LANDING, N.C.

DATE:

TOWN OF BRECH MOUNTAIN
 POTENTIAL WATAUGA RIVER WATER INTAKE

TOWN OF BRECH MOUNTAIN
 PROJECT NO.

DATE:

BY:

SCALE:

PROJECT:

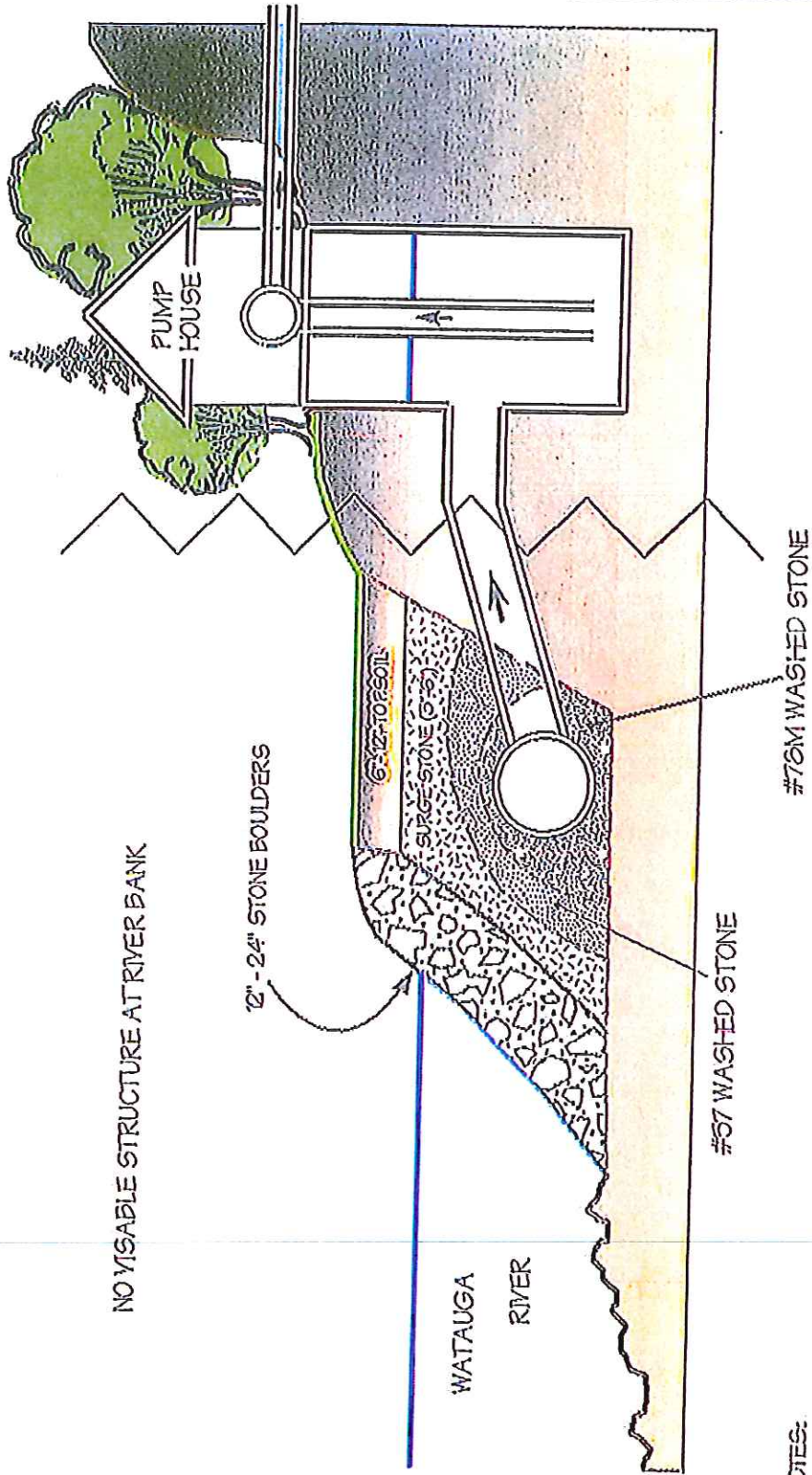
DATE:

BY:

SCALE:

PROJECT:

ELEVATION CUT-AWAY SCHEMATIC



NOTES:

1. 1

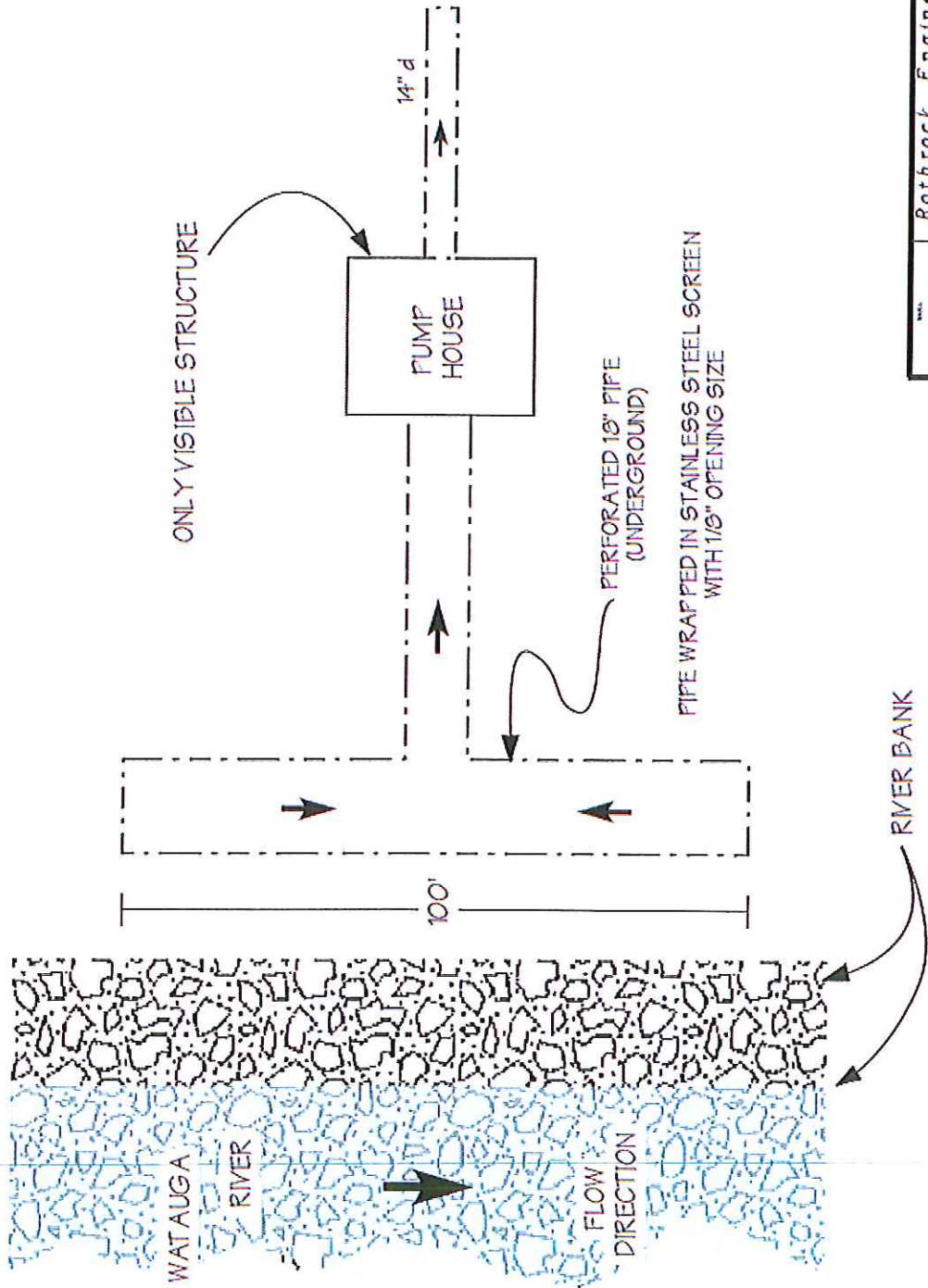
SECTION 1 OF 1



Rothrock Engineering

TITLE: TOWN OF BEECH MOUNTAIN
 PROJECT: WATAUGA RIVER WATER INTAKE
 CLIENT: TOWN OF BEECH MOUNTAIN
 DATE: 10/20/11
 DRAWN BY: JLD
 CHECKED BY: JLD
 SCALE: AS SHOWN
 SHEET NO.: 1 OF 1

PLAN VIEW SCHEMATIC



NOTES:

1
2
3

REVISION 10.1 2/27/18



Rothrock Engineering

STATE	NC
TOWN	TOWN OF BEECH MOUNTAIN
PROJECT	PROPOSED WATAUGA RIVER WATER INTAKE
CLIENT	TOWN OF BEECH MOUNTAIN
JOB NO.	2000
DATE	10/27/18
SCALE	AS SHOWN
DATE	10/27/18
NO.	10000
REV.	10/27/18

STATE OF NORTH CAROLINA

COUNTY OF WATAUGA

RESOLUTION IN SUPPORT OF THE RECLASSIFICATION OF
A PORTION OF THE WATAUGA RIVER
WATAUGA COUNTY, NORTH CAROLINA

WHEREAS, the Town of Beech Mountain intends to request that the N.C. Department of Environment and Natural Resources allow for a new supplemental surface water intake to be located on the Watauga River; and

WHEREAS, the State of North Carolina Department of Environment and Natural Resources' Division of Water Resources requires the reclassification of all watersheds that serve as water supplies to protect the quality of those waters; and

WHEREAS, the land use practices required by the Water Supply IV reclassification for the supplemental water supply intake adequately protect the water supply; and

WHEREAS, the need for the new supplemental surface water intake is necessary based on hydrologic calculations and confirmed by recent periods of drought when the existing Buckeye Creek Reservoir became insufficient to provide adequate water to the Town of Beech Mountain, which includes citizens of Watauga County; and

WHEREAS, the North Carolina Department of Environment and Natural Resources, Public Water Supply Section, supports the efforts of the town to locate a supplemental water intake on the Watauga River upstream of the confluence of Beech Creek as evidenced in a letter dated October 17, 2011; and

WHEREAS, the County Commissioners of Watauga County recognize the need of the Town of Beech Mountain for a reliable source of water supply and the importance of protecting and sustaining the water quality of the Watauga River;

NOW THEREFORE BE IT RESOLVED that the Watauga County Board of Commissioners support the Town of Beech Mountain's effort to locate a supplemental surface water intake on the Watauga River in the County of Watauga, North Carolina, as supported by the North Carolina Department of Environment and Natural Resources, Division of Water Resources.

Nothing in this resolution shall affect or interfere with fulfillment of the obligations and rights of the parties hereto to manage the lands and programs administered by them in accordance with their other basic land management responsibilities.

Nor shall this resolution be understood to affect any lands outside of the designated Water Supply IV supplemental water supply watershed.

ADOPTED this the ____ day of _____, 2013.

Nathan A. Miller, Chairman
Watauga County Board of Commissioners

Attest:

Anita J. Fogle, Clerk to the Board